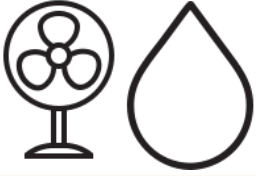


SATO-40 - 80 - 115 - 170 - 220

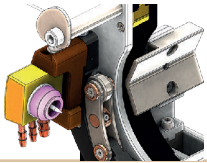
AXXAIR
INNOVATIVE ORBITAL SOLUTIONS

Air Cooled or Water Cooled



Roller mechanical profile tracking

Constant arc voltage without marking the tube



Compatible With the SAXX generators

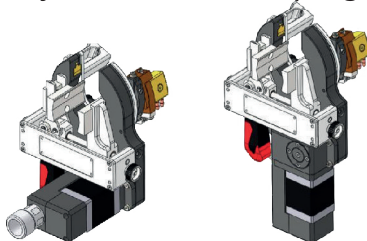


Transport

These heads are delivered in their individual transport case

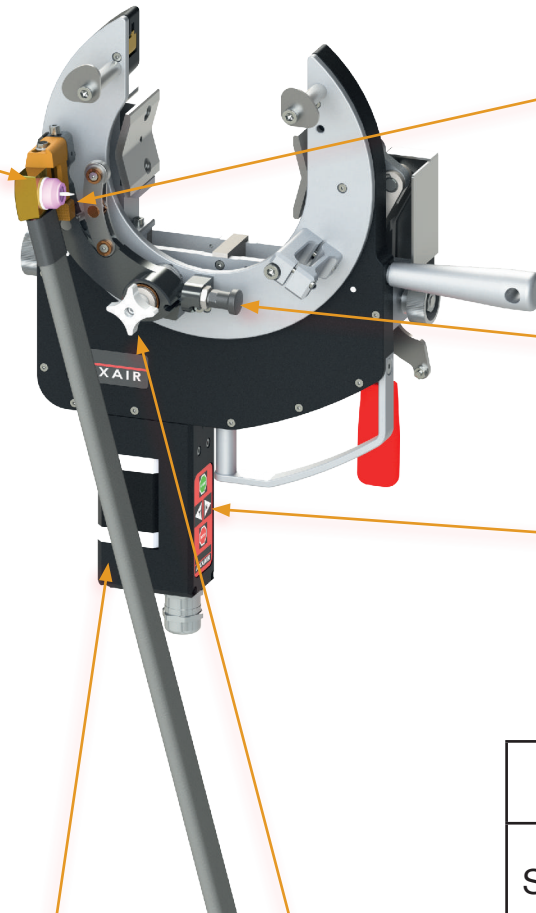
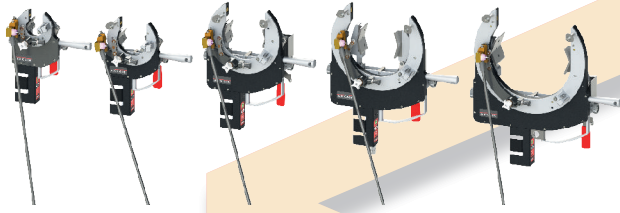


Straight or Angled motor
Symmetrical clamping



Axial Adjustment

Wheel for axial adjustment of the position of the electrode

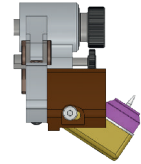


Protection

High protection against arcing outside the electrode

Torch angle adjustment

Welding flanges and short T angle



Locked open position

Motorization with encoder

Allows STARTING IN ALL ANGULAR electrode positions

Welding range	
SATO 40	∅ 10 - ∅ 40 mm 0.4- 1.5 "
SATO 80	∅ 19 - ∅ 80 mm 0.75 - 3 "
SATO 115	∅ 19 - ∅ 115 mm 0.75 - 4.5 "
SATO 170	∅ 25 - ∅ 170 mm 1 - 6.625 "
SATO 220	∅ 38 - ∅ 220 mm 1.5 - 8.265 "



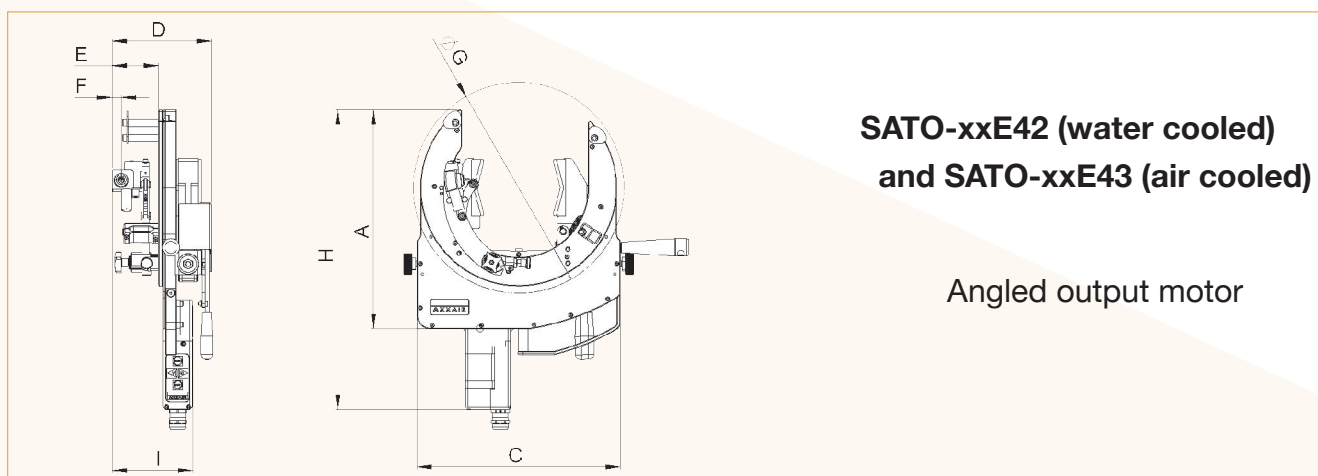
SATO-40 - 80 -115 - 170 -220



Technical characteristics:

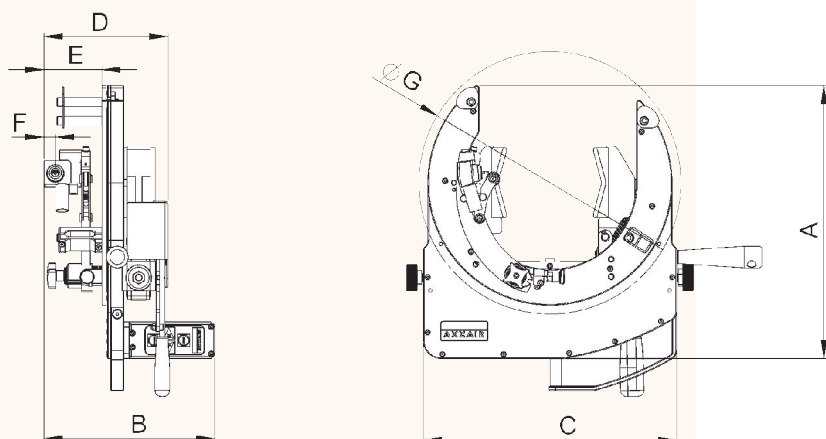
- WATER or AIR cooled head
- Mechanical profile tracking: constant arc height without marking the tube
- Quick symmetrical tightening by lever
- Motorization with encoder: allows starting from any angular position of the electrode
- Wide diameter range
- Inclination and axial adjustment of the electrode
- Small rotation sweep from the centre of the tube
- Compact design

Choice of two different models (to choose according to your applications)



SATO-XXE41 (water cooled) and SATO-xxE43 (air cooled)

Straight output motor



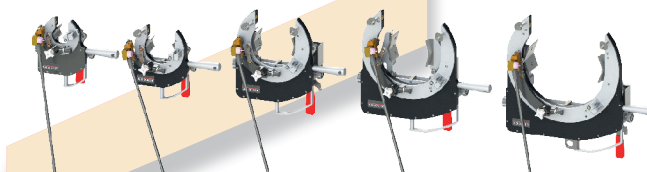
	A mm	B mm	C mm	D mm	E mm	F mm	G mm	H mm	I mm
SATO-40	169	183 to 191	142	116 to 126	57 to 67	13	Ø140	270	113 to 121
SATO- 80	181	186 to 196	160	116 to 126			279		
SATO-115	265	186 to 196	230	133 to 143			Ø224	363	
SATO-170	312	186 to 196	290	133 to 143			Ø294	410	
SATO-220	353	186 to 196	350	133 to 143			Ø350	451	



SATO-40 - 80 -115 - 170 -220

AXXAIR

INNOVATIVE ORBITAL SOLUTIONS



Motor	Cooling	Product Code	Welding machine for tubes of the following diameters (in mm)	Net weight	Customs code	Dimensions (AxBxC in mm)
Angled motor	WATER	SATO-40E42	∅ 10 - ∅ 40 mm	3.8 kg	85153 10000	169 x 183 x 142
		SATO-80E42	∅ 19 - ∅ 80 mm	4.2 kg		181 x 186 x 160
		SATO-115E42	∅ 19 - ∅ 115 mm	6.7 kg		265 x 186 x 230
		SATO-170E42	∅ 25 - ∅ 170 mm	8 kg		312 x 186 x 290
		SATO-220E42	∅ 38 - ∅ 220 mm	9.4 kg		353 x 186 x 350
	NEW AIR	SATO-40E44	∅ 10 - ∅ 40 mm	3.8 kg	85153 10000	169 x 183 x 142
		SATO-80E44	∅ 19 - ∅ 80 mm	4.2 kg		181 x 186 x 160
		SATO-115E44	∅ 19 - ∅ 115 mm	6.7 kg		265 x 186 x 230
		SATO-170E44	∅ 25 - ∅ 170 mm	8 kg		312 x 186 x 290
		SATO-220E44	∅ 38 - ∅ 220 mm	9.4 kg		353 x 186 x 350
Straight Motor	WATER	SATO-40E41	∅ 10 - ∅ 40 mm	3.8 kg	85153 10000	169 x 191 x 142
		SATO-80E41	∅ 19 - ∅ 80 mm	4.2 kg		181 x 196 x 160
		SATO-115E41	∅ 19 - ∅ 115 mm	6.7 kg		265 x 196 x 230
		SATO-170E41	∅ 25 - ∅ 170 mm	8 kg		312 x 196 x 290
		SATO-220E41	∅ 38 - ∅ 220 mm	9.4 kg		353 x 196 x 350
	NEW AIR	SATO-40E43	∅ 10 - ∅ 40 mm	3.8 kg	85153 10000	169 x 191 x 142
		SATO-80E43	∅ 19 - ∅ 80 mm	4.2 kg		181 x 196 x 160
		SATO-115E43	∅ 19 - ∅ 115 mm	6.7 kg		265 x 196 x 230
		SATO-170E43	∅ 25 - ∅ 170 mm	8 kg		312 x 196 x 290
		SATO-220E43	∅ 38 - ∅ 220 mm	9.4 kg		353 x 196 x 350

